

# SP-XUV5101

## Touch screen xenon lamp double beam UV Vis spectrophotometer

### Features

- 10.1 inches high resolution TFT colored capacitive touch screen (1024\*600) and windows graphic interface.
- Powerful functions like Photometric measurement, Quantitative measurement, Kinetics, Spectrum scan, DNA\Protein test, multi-wavelength test, etc
- In-house massive memory is capable of saving up to 1024M for test data & working curves.
- Various optional accessories, like automatic cell holder, thermostatic automatic sampler, adjustable micro cell holder, reflection accessory and integrating sphere, etc. which extend the application range of device and combine the requirements of common samples and special ones.
- Supports USB storage. The USB port can be used for data transfer, which is easily exported to Excel for further processing, analysis and storage.
- Socket type deuterium and tungsten lamp can make lamps switching without optics debugging and easy to be replaced.
- Xenon lamp light source with extra-long serve life saves you the trouble of changing lamps;
- Follow GLP/GMP standards, user management, logging, data tracking and exporting, etc. are all available.



| Specifications            | SP-XUV5101   |
|---------------------------|--|
| Optical System            | Double Beam  |
| Wavelength Range          | 190-1100 nm  |
| Spectral Bandwidth        | 1.0nm  |
| Wavelength Accuracy       | ±0.1nm (at 656.1nm), ±0.3nm full range   |
| Wavelength Repeatability  | ≤0.1nm   |
| Photometric Accuracy      | ±0.0015A(0~0.5A)±0.002A(0.5A~1A)   |
| Photometric Repeatability | ±0.001A(0~0.5A)±0.0015A(0.5A~1A)   |
| Photometric Range         | -0.3~3A,0~9999C(0~9999F)   |
| Stray Light               | ≤0.02%T @ 220,360nm  |
| Stability                 | ≤0.001 A/h / 500nm   |
| Baseline Flatness         | ±0.001A  |
| Noise                     | 0.0005A@500nm  |
| Work Mode                 | T, A, C, E   |
| Scanning Speed            | High   Medium   Slow   |
| Wavelength Setting        | Auto   |
| Display                   | 10.1-inch large color touch screen(1024×600)   |
| Light Source              | Hamamatsu Xenon Lamp (Japan)   |
| Detector                  | Imported Silicon Photodiode  |
| Cuvette Holder            | Single hole 1cm holder(standard for double beam)   |
| Output                    | USB Port Printer Port  |
| Power Requirements        | 110/220V,50/60Hz,120W  |
| Dimension[L×W×H]          | 570mm×440×210mm  |
| Weight                    | 20kg   |
| Standard Accessories      | 10mm glass cuvette x 4, 10mm quartz cuvette x 2, Power cord, User's Manual , PC software |



**item No.** 18901008

1mm(H)\*10mm(W)\*30mm(L)  
(for SP-UV3101/SP-UV3102/  
SP-UV5101/SP-UV5102)



**item No.** 18901007

Thin film sample holder  
1mm (H) \*10mm (W) \*30mm (L)  
(for SP-UV2101/SP-UV2102)



**item No.** 18901009

Single hole 1cm holder  
(for SP-UV3101/SP-UV3102/  
SP-UV5101/SP-UV5102)



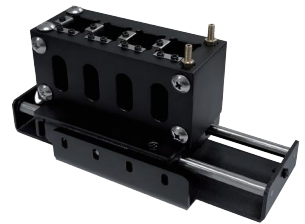
**item No.** 18901010

Single hole 5cm holder(1cm-10cm)  
(for SP-UV3101/SP-UV3102/  
SP-UV5101/SP-UV5102)



**item No.** 18204256

4 position 5cm holder(1cm-5cm)  
(for SP-UV2101/SP-UV2102)



**item No.** 18900336

10MM water bath 4-position manual  
cuvette holder 1cm  
(for SP-UV2101/SP-UV2102)



**item No.** 18901012

Integrating Sphere  
95mm(L)\* 101mm(W)\* 99mm(H)  
(for SP-UV3101/SP-UV3102/  
SP-UV2101/SP-UV2102)



**item No.** 18901013

Automatic 8-position cell holder  
1cm  
(for SP-UV2101/SP-UV2102)



**item No.** 18901014

Automatic 5-position cell holder  
1cm-5cm  
(for SP-UV2101/SP-UV2102)



item No. 18902175

Automatic 4-position cell holder  
1cm-5cm  
(for SP-UV2101/SP-UV2102)



item No. 18902200

Automatic 8-position cell holder  
1cm  
(for SP-UV3101/SP-UV3102/  
SP-UV5101/SP-UV5102)



item No. 18901011

Deuterium lamp (A510KU) 10V  
(for SP-UV3101/SP-UV3102/  
SP-UV2101/SP-UV2102)



item No. 18901382

Tungsten lamp HYBEC  
(for SP-UV3101/SP-UV3102/  
SP-UV2101/SP-UV2102)



item No. 18901509

Visible light precision filter  
440, 546, 635nm  
(for full series)



item No. 18901510

UV-K2Cr2O7  
235, 257, 313, 350nm  
(for full series)



item No. 18901511

HOMIUM  
241, 361, 417, 538, 641nm  
(for full series)



item No. 18901512

Stray light filter  
220nm  
(for full series)



item No. 18901513

Stray light filter  
360nm  
(for full series)