

# Forced Convection Chamber Furnaces – Tabletop Design

electrically heated

These forced convection chamber furnaces are characterized by their good temperature uniformity. Due to the compact tabletop design, this series is very well suited for installation in laboratories or rooms with limited space.

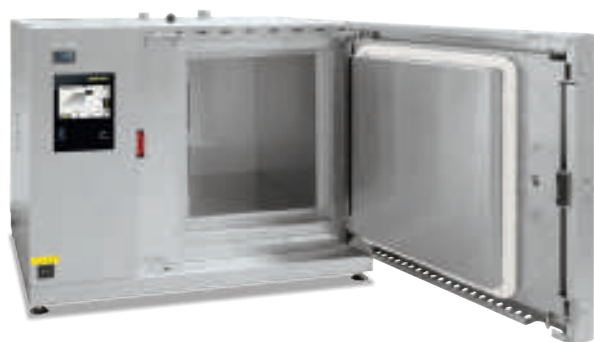
Applications include preheating of components for shrink-fit processes, heat treatment of metals in air such as aging, stress relieving, soft annealing or tempering, and heat treatment of glass.



Forced convection chamber furnace NAT 15/85 with base frame as additional equipment

## Standard Equipment

- Tmax 650 °C or 850 °C
- Horizontal air circulation with optimum distribution through stainless steel baffles
- Integrated control unit
- Swing door hinged on the right side, door opening temperatures up to 400 °C
- Temperature uniformity up to  $\pm 6$  °C according to DIN 17052-1 (model NAT 15/65 up to  $\pm 5$  °C) see page 77
- Optimum air distribution enabled by high flow speeds
- Air inlet in the rear wall of the furnace
- Adjustable exhaust port in the furnace ceiling (not for model NAT 15/65)
- 15 mm port in the furnace ceiling (not for model NAT 15/65)
- Controller with touch operation B500/B510 (5 programs with 4 segments each), controls description see page 84



Forced convection chamber furnace NAT 30/65

## Additional Equipment (not for NAT 15/65)

- Base frame
- Charging racks for loading on several levels
- Equipment package with batch control and process control and documentation via VCD software package



Forced convection chamber furnace NAT 30/85



Forced convection chamber furnace NAT 50/85

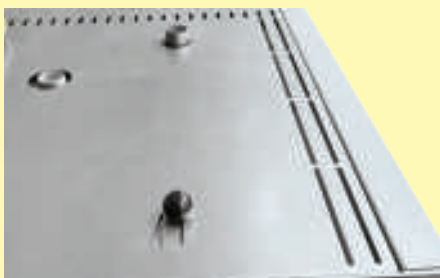
Model	Tmax °C	Inner dimensions in mm			Volume in l	Outer dimensions <sup>1</sup> in mm			Heating power in kW <sup>2</sup>	Electrical connection*	Weight in kg	Heat-up time <sup>3</sup> to Tmax in minutes
		w	d	h		W	D	H				
NAT 15/65	650	295	340	170	15	470	790	460	2.8	1-phase	60	35
NAT 30/65	650	320	320	300	30	810	620	620	3.0	1-phase	90	80
NAT 60/65	650	400	400	400	60	890	700	720	3.0	1-phase	110	100
NAT 15/85	850	320	320	150	15	690	880	570	3.0	1-phase	85	190
NAT 30/85	850	320	320	300	30	690	880	720	3.0	1-phase	100	230
NAT 50/85	850	400	320	400	50	770	880	820	4.5	3-phase	130	230

<sup>1</sup>External dimensions vary when furnace is equipped with additional equipment. Dimensions on request.

<sup>2</sup>Depending on furnace design connected load might be higher

<sup>3</sup>Approx. information in empty furnace

\*Please see page 84 for more information about supply voltage



Adjustable exhaust port in the furnace ceiling



Forced convection chamber furnace NAT 15/85



Interior made of stainless steel sheet 1.4828