

Tube Furnaces with Stand for Horizontal and Vertical Operation up to 1500 °C

These compact tube furnaces are used when laboratory experiments must be performed horizontally, vertically, or at specific angles. The ability to configure the angle of tilt and the working height, and their compact design, also make these tube furnaces suitable for integration into existing process systems.



Tube furnace RT 50/250/13

Standard Equipment

- Tmax 1100 °C, 1300 °C, or 1500 °C
- Compact design
- Vertical or horizontal operation infinitely adjustable
- Angle infinitely adjustable from 0° to 90°
- Working height infinitely adjustable
- Operation also possible without stand if safety guidelines are observed
- Ceramic working tube C 530 including two fiber plugs for operation under air
- Type S thermocouple
- Heating wires wound directly around the working tube at models with Tmax 1100 °C and 1300 °C, resulting in very fast heat-up rates
- Heating elements arranged radially around the working tube at models with Tmax 1500 °C, which allows an easy exchange of the working tube
- Control system integrated in furnace base
- Controller with touch operation B510 (5 programs with each 4 segments), alternative controllers see page 84

Additional Equipment

- Over-temperature limiter with adjustable cutout temperature as temperature limiter to protect the furnace and load
- Gas supply system 1 for non-flammable process gas see page 34

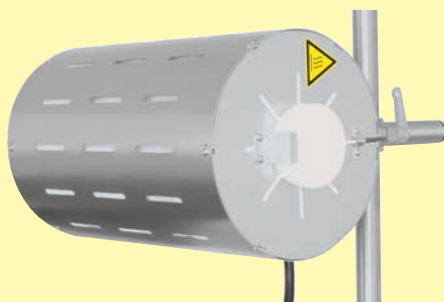
Model	Tmax ¹	Outer dimensions ² in mm			Inner tube Ø	Heated length	Length constant	Tube length	Connected load ³	Electrical connection*	Weight
	in °C	W	D	H	in mm	in mm	temperature ¹ +/- 5 K in mm	in mm	in kW		in kg
RT 50/250/11	1100	350	380	740	50	250	80	360	2	1-phase	25
RT 50/250/13	1300	350	380	740	50	250	80	360	2	1-phase	25
RT 30/200/15	1500	445	475	740	30	200	70	360	2	1-phase	45

¹Values outside the tube. Difference to temperature inside the tube up to + 50 K

²External dimensions vary when furnace is equipped with additional equipment. Dimensions on request.

³The connected load refers to the standard furnace and may increase for a furnace with additional equipment. For furnaces with connection options for multi-range voltages, the connected load applies to the highest permissible connected voltage.

*Please see page 84 for more information about supply voltage



Horizontal operation



Gas panel for one non-flammable process gas (N₂, Ar, He, air, forming gas)



Example of an over-temperature limiter